



— est. 1964 —

Installation Instructions

Atlanta Vanity Next Generation

Complete Collection

Contents

	Page
<u>Bathroom Furniture Assembly Instructions Introduction</u>	2
<u>Vanity Units</u>	3 -8
<u>Cloakroom Vanity Units</u>	9 - 13
<u>PVC Legs</u>	14 - 15
<u>Worktops</u>	16 - 18
<u>Harmony Mirror End Panel</u>	19 - 20
<u>Guarantee</u>	21

Bathroom Furniture Assembly Instructions

Product Identification

All units can be easily identified from the labels on the packaging. These labels include a description and product batch numbers. In the unlikely event of any missing items, these numbers should be quoted when contacting your supplier.

Please inspect all products carefully before installation.

The guarantee does not cover any subsequent installation costs incurred if faults which would have been evident at the time of delivery are discovered after installation.

Installation Guide and Assembly Manual

It is recommended that this guide should be read before any installation of units begins. Always unpack units carefully and check the contents before discarding the packaging as small items may still be in the packaging. To protect units from scratches only lay them on a clean flat surface.

Electrical

Carrying out work in a bathroom that requires any addition or alteration to existing circuits could be notifiable to your local building control department to ensure it meets the correct safety standards. Generally, any work carried out to the circuit within a specific zone close to the bath or shower unit is considered notifiable. A straightforward way of meeting the requirements is to use a contractor who is registered with a Competent Person Scheme such as NICEIC or ELECSA. They can self-certify the work and notify the local building control department on your behalf.

Sanitaryware

Basins

Any unit edges around wash basins must be sealed with a waterproof agent or sealer.

Basins should be levelled on a bead of silicon onto the base unit if possible before the final water and waste connections are made.

W/C Units

You will need to make cut-outs for pipes and cistern controls as directed by the Manufacturer's instructions or templates, remembering to seal any raw edges. The cistern will require fixing to the cross rail. (These fixings are not supplied)

Please note: These units are designed for back-to-wall pans as well as suspended "wall hung" pans when used with a suitable suspension frame.

Guidelines for Care and Maintenance

To maintain the appearance and prolong the life of your new bathroom products we recommend the following,

Furniture

Wipe spills up immediately with a clean soft damp cloth as excessive amounts of spillage or condensation can cause deterioration of the woodwork. We recommend that furniture be cleaned with a soft damp cloth and warm soapy water. Avoid using cleaners or polishes that contain abrasives, solvents, acid or ammonia.

Mirrors

Wipe off excessive moisture or condensation, clean with a soft cloth. Avoid using cleaners that contain abrasives, solvents, acid or ammonia.

Ceramic Sanitaryware

Clean with a soft damp cloth and warm soapy water; rinse with clean water and polish with a soft cloth. Avoid using cleaners that contain abrasives, solvents, acid or ammonia.

Gel-coated Cast Mineral Washbasins

Gel-cast basins are designed and guaranteed to be used with hot water up to a maximum temperature of 65°C, this temperature must not be exceeded.

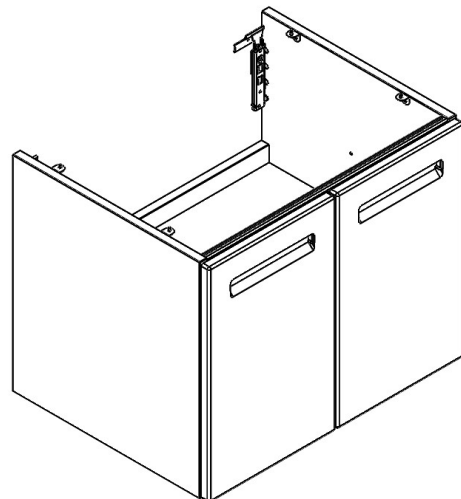
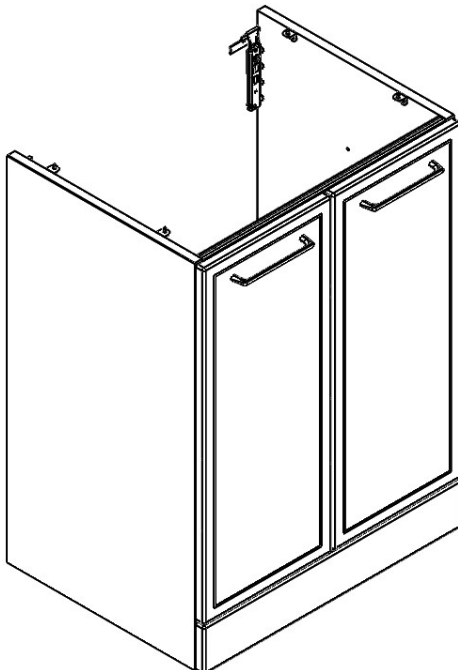
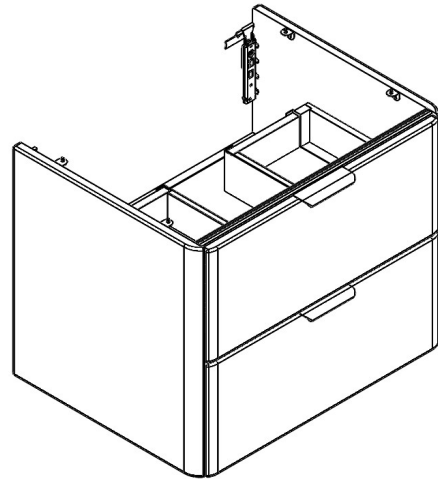
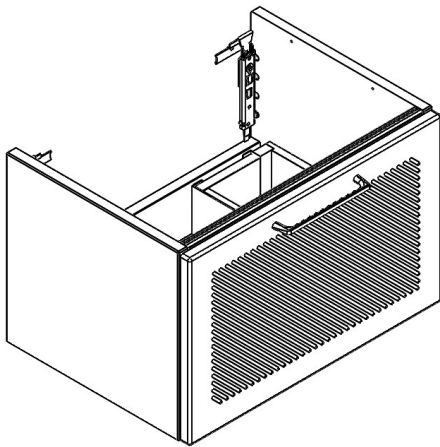
Clean with a soft damp cloth, water and soap or very mild detergent, rinse and polish with a soft cloth. Avoid using cleaners that contain abrasives, solvents, acid or ammonia. Do not use caustic soda or bleaches. For a good shine use a fine polish around twice a year and then finish with a wax e.g. car wax. Care instructions are included with the washbasin.

Brassware

Clean with a damp cloth, water and soap, rinse clean and polish with a cloth.

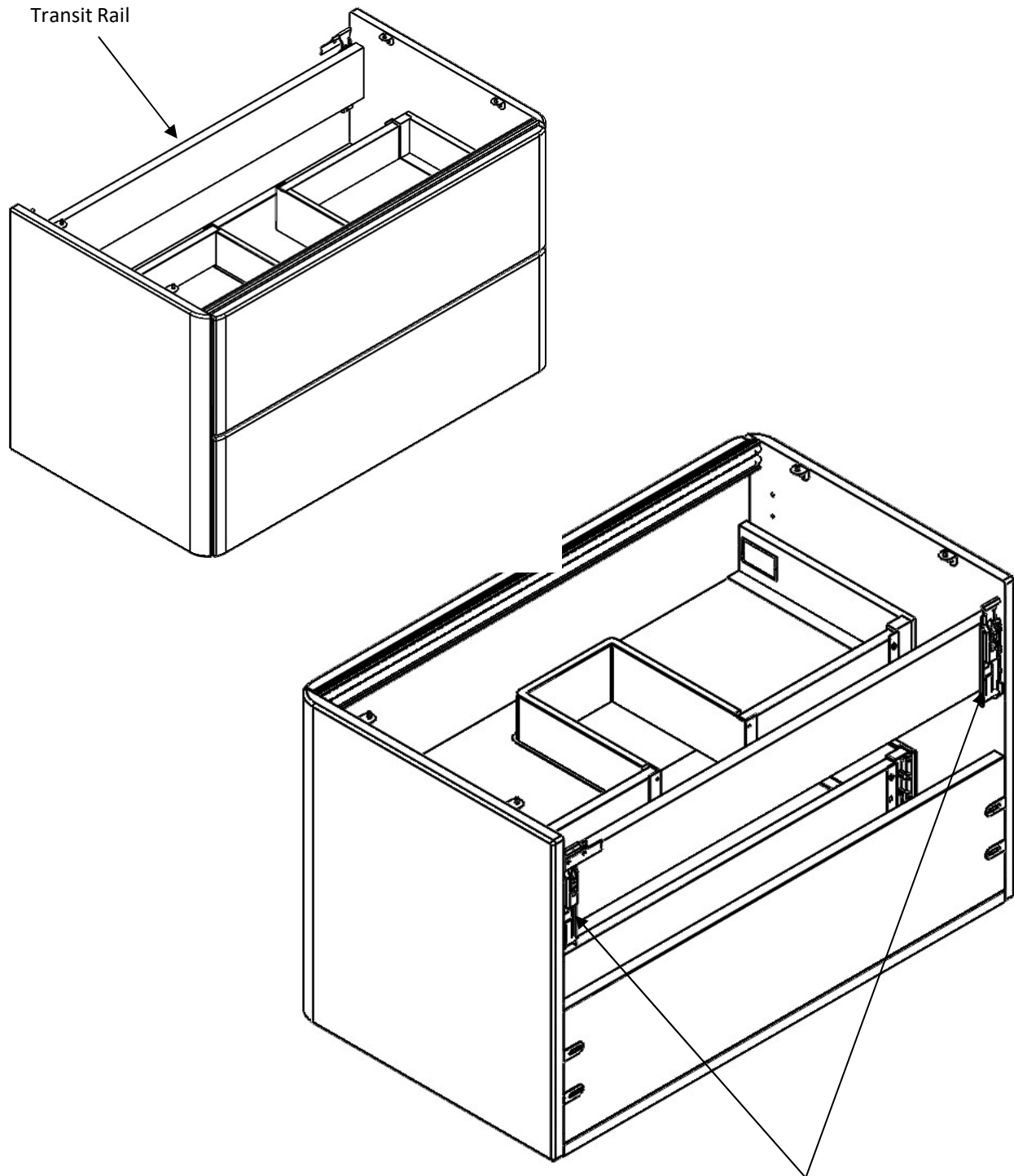
Avoid using cleaners that contain abrasives, solvents, acid or ammonia.

Installation Instruction Vanity Units



Installation

Note: All 800mm width cabinets are fitted with a transit rail. This rail must be removed prior to installation.



To remove transit rail remove screws from cabinet hanging bracket

Installation

Note: All cabinets should be fastened to the wall before fixing the basin, after alignment we recommend additional wall fixings are made, then the final installation of the basin can be carried out.

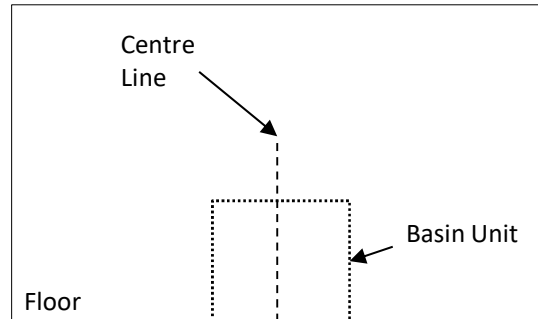


Diagram 1

Note: Consider where the pipes are located before beginning the installation.

To begin, place the Basin Unit into the desired installation position in the room.

Mark a centre line on the wall.

See Diagram 1.

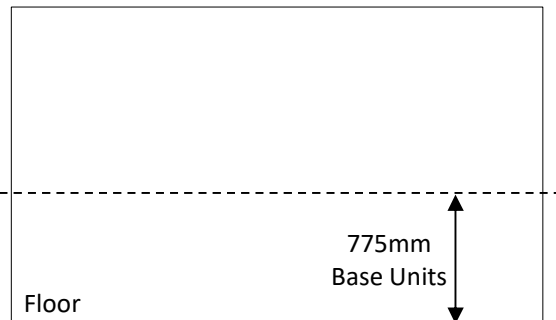


Diagram 2

Note: We recommend an installation height of 820mm. This is also to match the height of the WC Unit.

Draw a horizontal line **775mm** from the floor, this is the height the hanging brackets will be fitted at, so the unit has a finished height of 820mm. For other installation heights, adjust accordingly.

See Diagram 2.

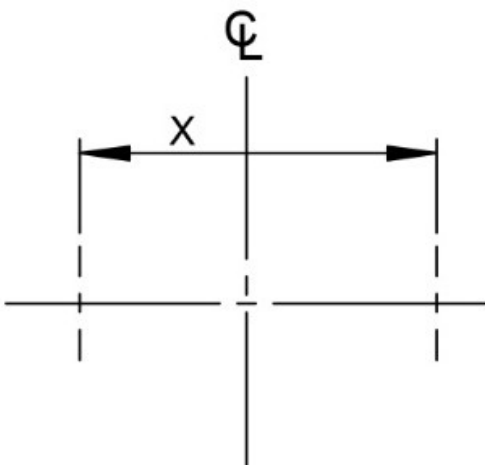


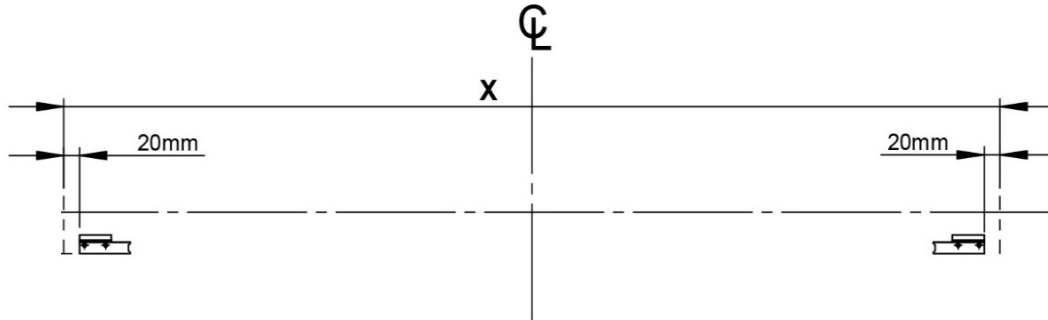
Diagram 3

Next mark the position of the outer edges of the Units = **X**, working out from the centre line.

See Diagram 3.

Installation

Diagram 4



For all units mark out the position of the wall plates (supplied as pairs) using the dimensions provided above.

Once marked, drill the fixing positions. Depending on the wall medium, it may be necessary to plug the drilled holes. See '**Important Note**' below.

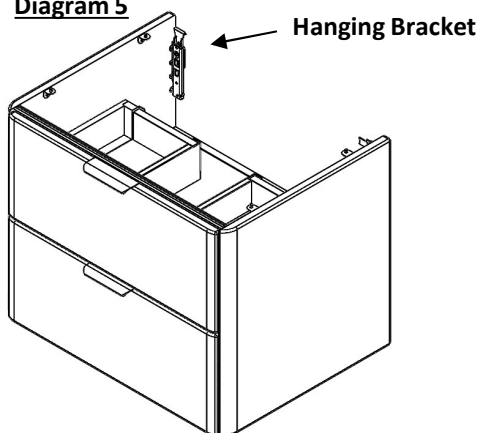
Next screw and secure the wall plates to the wall using suitable screws. See '**Important Note**' below.

See **Diagram 4**.

IMPORTANT NOTE:

Wall fixings (i.e. screws/wall plugs etc.) are not supplied as these are crucially dependent upon the type of wall and surface the surround is going to be fixed too. The installer is therefore responsible for ensuring that suitable fittings are used according to the particular model to be installed as well as individual fitting situations and environments. All mechanical fixings, for holding the product in position, must be secured to a solid wall or structure.

Diagram 5

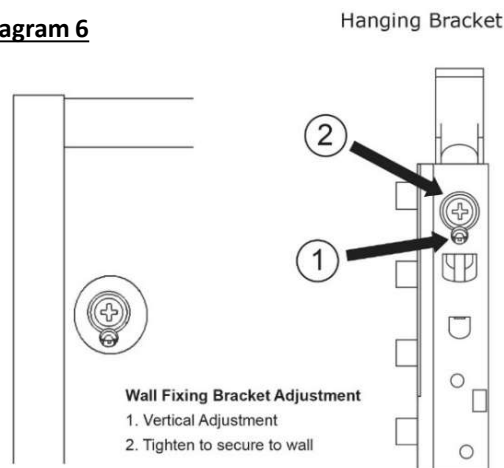


Hanging the Unit

Hang the units, making sure the hanging brackets on the rear of the units, engage with the wall plates on the wall.

See **Diagram 5**.

Diagram 6



Hanging Bracket Adjustment

Adjust the units so they sit level, using a Pozi screw driver. **(1)**

Finally fix the units in position by tightening screws, using a Pozi screw driver. **(2)**

See **Diagram 6**.

Door Adjustments

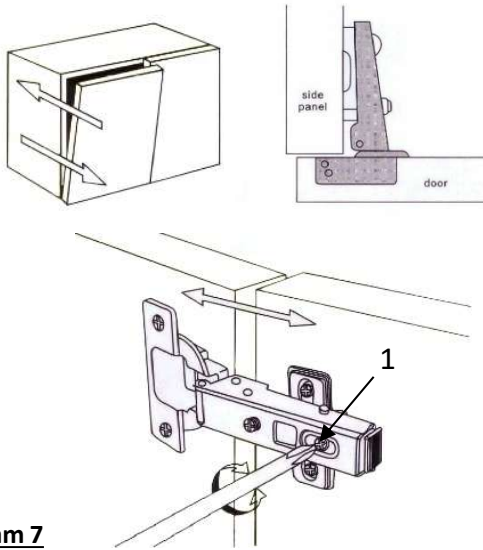


Diagram 7

Door Front adjustment

Set the distance between the back face of the door and the edge of the unit side panel.

Tip: Leave an approx. 2mm gap to help avoid binding.

To fix the hinge arm to the hinge plate, tighten screws **(1)** securely.

See Diagram 7.

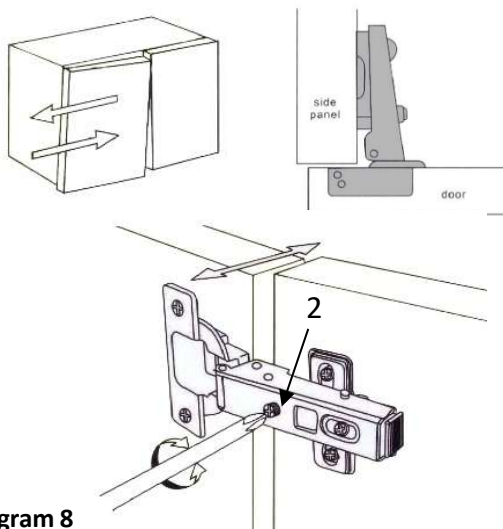


Diagram 8

Door Lateral overlay adjustment

Adjust screws **(2)** to adjust the edge of the door so it is runs parallel with the outside face of the unit side panel.

Note: The edge of the door should be set back approx. 1.5mm from the edge of the unit.

Note: For the protection of the damper, it only allows a lateral adjustment. (left to right)

See Diagram 8.

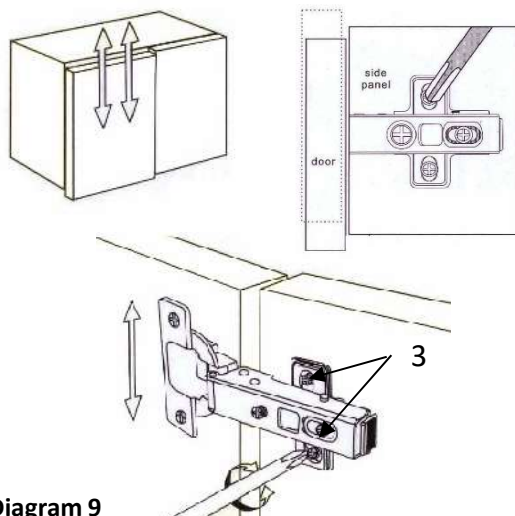


Diagram 9

Door Vertical adjustment

The door can be vertically adjusted by turning the plate screws up and down. **(3)**

The door can be vertically adjusted by loosening the screws **(3)** on all of the hinge plates on the door and carefully moving the door up or down as required.

Once in position re-tighten all the screws **(3)** to secure in place.

See Diagram 9.

Drawer Adjustment

Drawer Left/Right Adjustment

Turn screw Clockwise to adjust drawer to the right
Turn screw Anti-Clockwise to adjust drawer to the left.

See Diagram 10

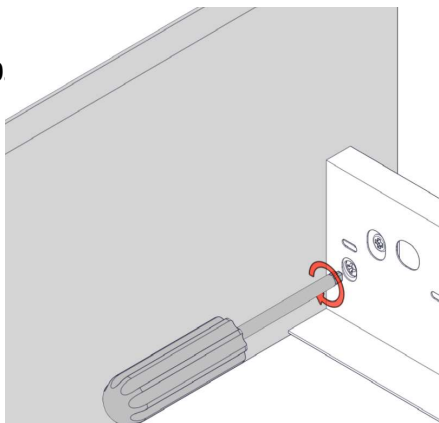


Diagram 10

Drawer Up/Down Adjustment

Turn screw Clockwise to adjust drawer upwards
Turn screw Anti-Clockwise to adjust downwards

See Diagram 11.

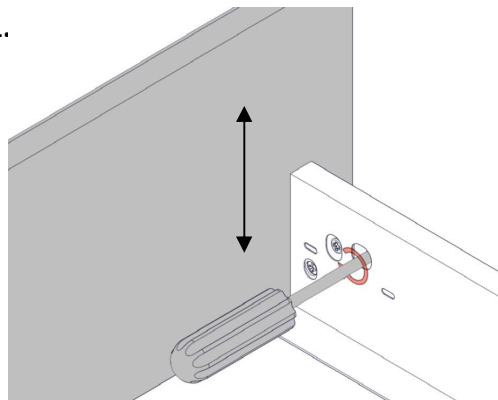


Diagram 11

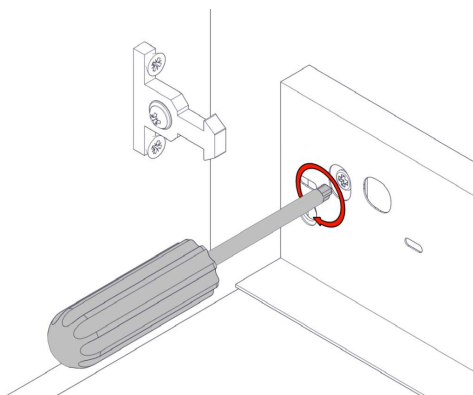


Diagram 12

Drawer Front Removal

Remove the cover caps **Diagram 8**.

Turn the screw anticlockwise indicated in **Diagram 12**.

This will remove the drawer front from the drawer box.

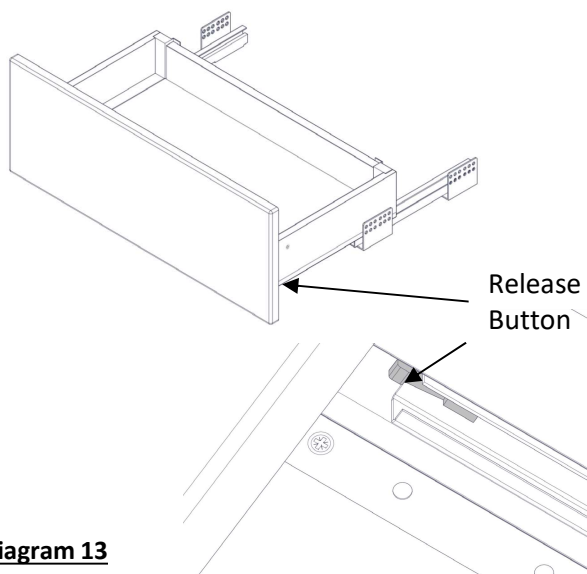


Diagram 13

Assembled Drawer Box Removal

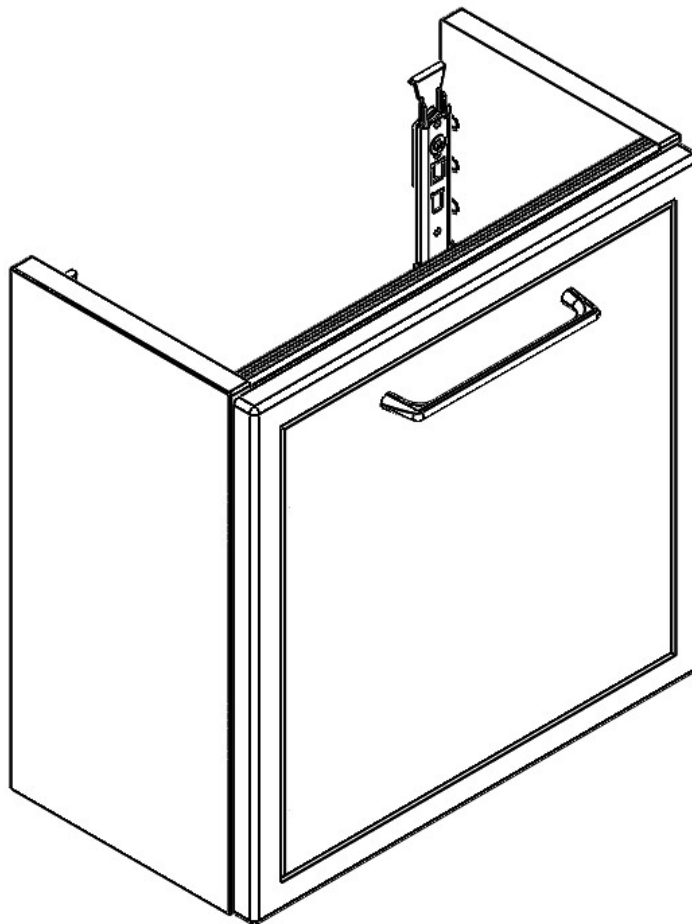
To remove the drawer box including the drawer front, open fully and push button on the underside of the drawer as indicated (**Diagram 13**).

While keeping the button pressed in lift the drawer box upward to remove.



— est. 1964 —

Installation Instruction Cloakroom Vanity Unit



Installation

Note: All cabinets should be fastened to the wall before fixing the basin, after alignment we recommend additional wall fixings are made, then the final installation of the basin can be carried out.

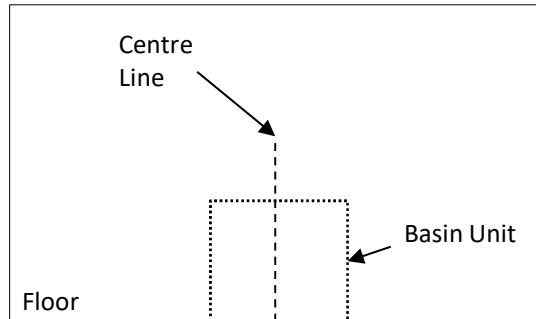


Diagram 1

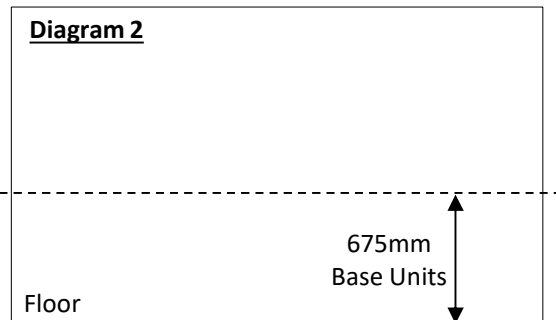
Note: Consider where the pipes are located before beginning the installation.

To begin, place the Basin Unit into the desired installation position in the room.

Mark a centre line on the wall.

See Diagram 1.

Diagram 2



Note: Height of 655mm required if using PVC legs

Note: We recommend an installation height of 820mm. This is also to match the height of the WC Unit.

Draw a horizontal line **675mm** from the floor, If using the PVC legs dimension of 695mm, This is the height the hanging brackets will be fitted at, so the unit has a finished height of 820mm. For other installation heights, adjust accordingly.

See Diagram 2.

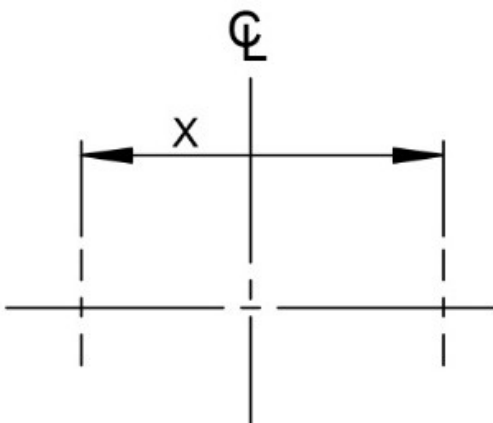


Diagram 3

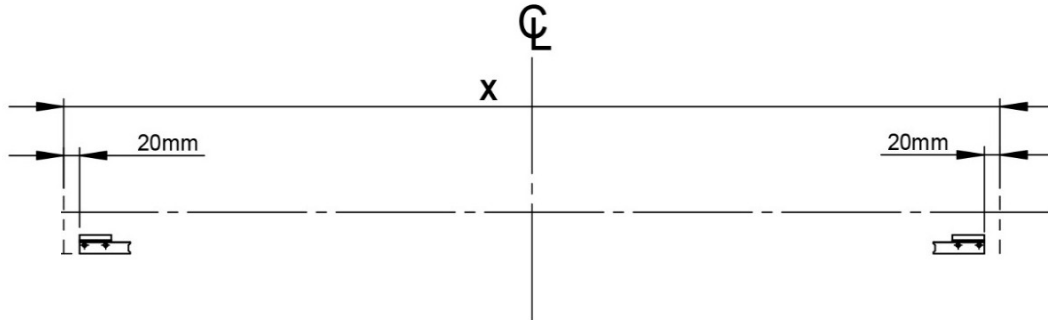
Floor

Next mark the position of the outer edges of the Units = **X**, working out from the centre line.

See Diagram 3.

Installation

Diagram 4



For all units mark out the position of the wall plates (supplied as pairs) using the dimensions provided above.

Once marked, drill the fixing positions. Depending on the wall medium, it may be necessary to plug the drilled holes. See '**Important Note**' below.

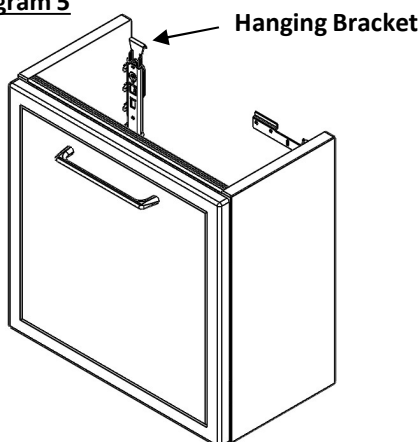
Next screw and secure the wall plates to the wall using suitable screws. See '**Important Note**' below.

See Diagram 4.

IMPORTANT NOTE:

Wall fixings (i.e. screws/wall plugs etc.) are not supplied as these are crucially dependent upon the type of wall and surface the surround is going to be fixed too. The installer is therefore responsible for ensuring that suitable fittings are used according to the particular model to be installed as well as individual fitting situations and environments. All mechanical fixings, for holding the product in position, must be secured to a solid wall or structure.

Diagram 5

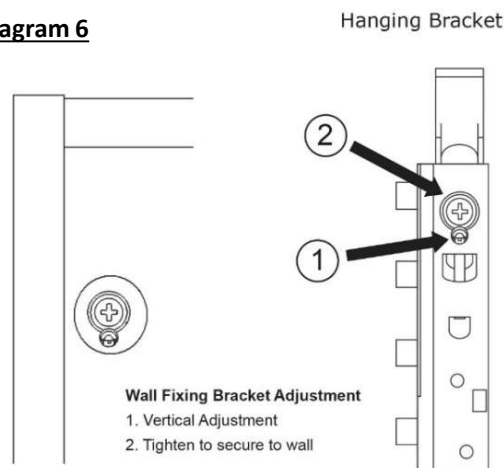


Hanging the Unit

Hang the units, making sure the hanging brackets on the rear of the units, engage with the wall plates on the wall.

See Diagram 5.

Diagram 6



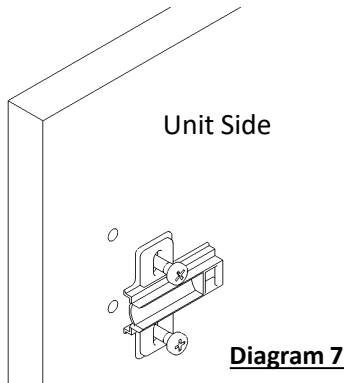
Hanging Bracket Adjustment

Adjust the units so they sit level, using a Pozi screw driver. (1)

Finally fix the units in position by tightening screws, using a Pozi screw driver. (2)

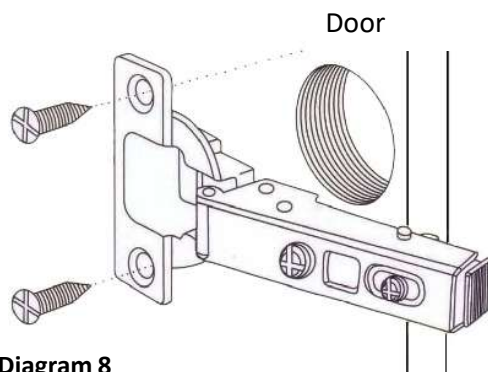
See Diagram 6.

Installation



Hanging the Doors

Firstly screw the hinge plate into unit side, using the predrilled 5mm holes as indicated in **Diagram 7**.

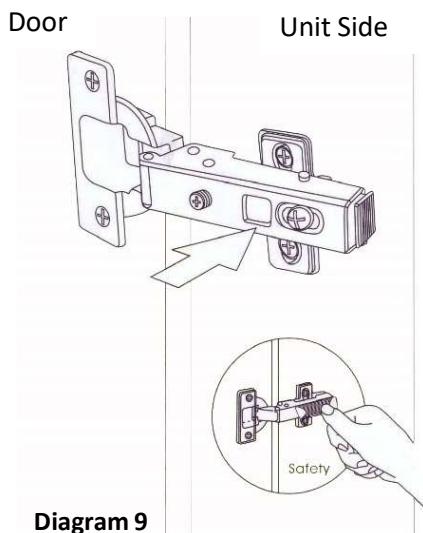


Hanging the Doors Continued.....

Tip: Lay the doors on a clean flat surface that will not damage or scratch the product.

Locate the hinge arm into predrilled 35mm hole on back of door and secure with **2No.6x5/8"** countersunk screws provided.

See **Diagram 8**.

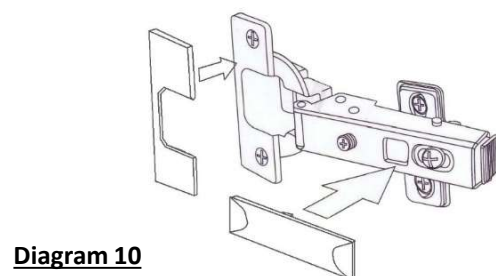


Hanging the Doors Continued.....

To hang the door, locate the hinge arm over the hinge plate and **click** into position.

See **Diagram 9**.

Tip: Adjust the alignment of the door before final tightening.



Hanging the Doors Continued.....

Click the cover plates into position on the hinges.

See **Diagram 10**.

Door Adjustments

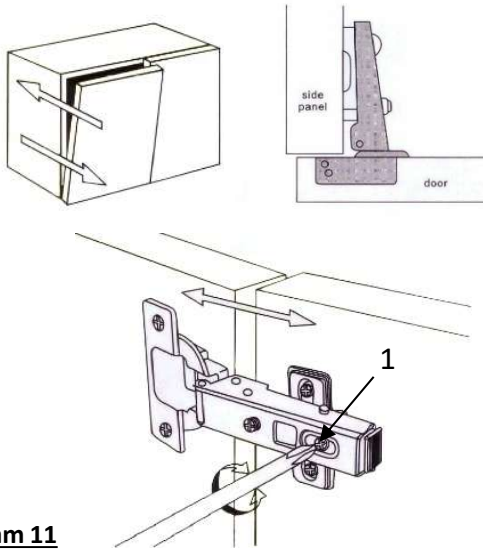


Diagram 11

Door Front adjustment

Set the distance between the back face of the door and the edge of the unit side panel.

Tip: Leave an approx. 2mm gap to help avoid binding.

To fix the hinge arm to the hinge plate, tighten screws **(1)** securely.

See Diagram 11.

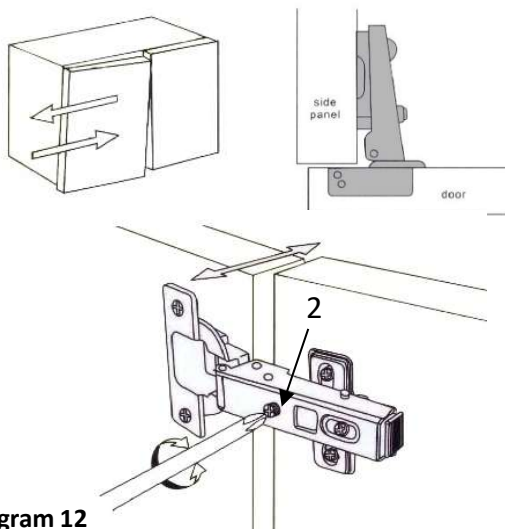


Diagram 12

Door Lateral overlay adjustment

Adjust screws **(2)** to adjust the edge of the door so it is runs parallel with the outside face of the unit side panel.

Note: The edge of the door should be set back approx. 1.5mm from the edge of the unit.

Note: For the protection of the damper, it only allows a lateral adjustment. (left to right)

See Diagram 12.

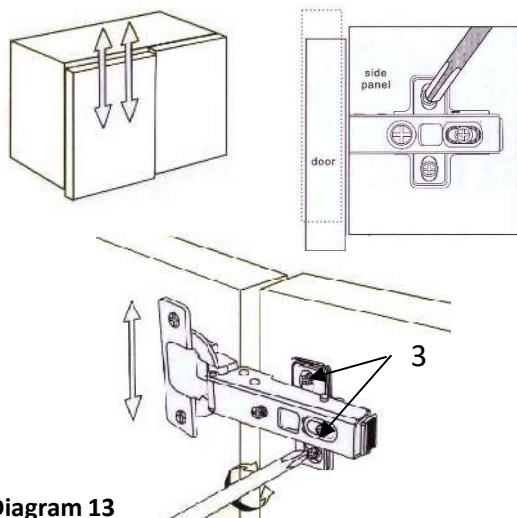


Diagram 13

Door Vertical adjustment

The door can be vertically adjusted by turning the plate screws up and down. **(3)**

The door can be vertically adjusted by loosening the screws **(3)** on all of the hinge plates on the door and carefully moving the door up or down as required.

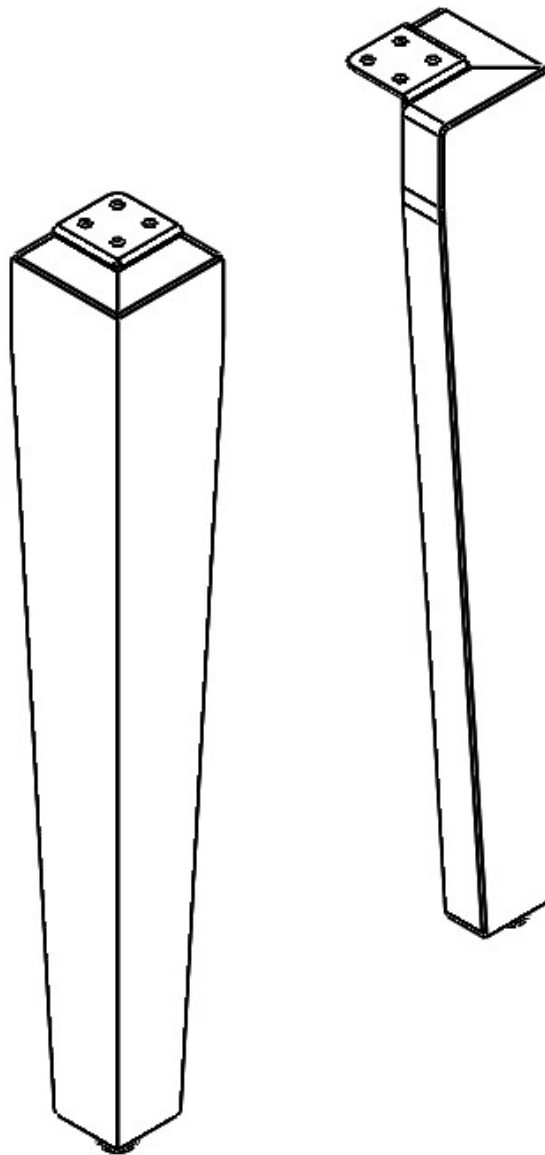
Once in position re-tighten all the screws **(3)** to secure in place.

See Diagram 13.



— est. 1964 —

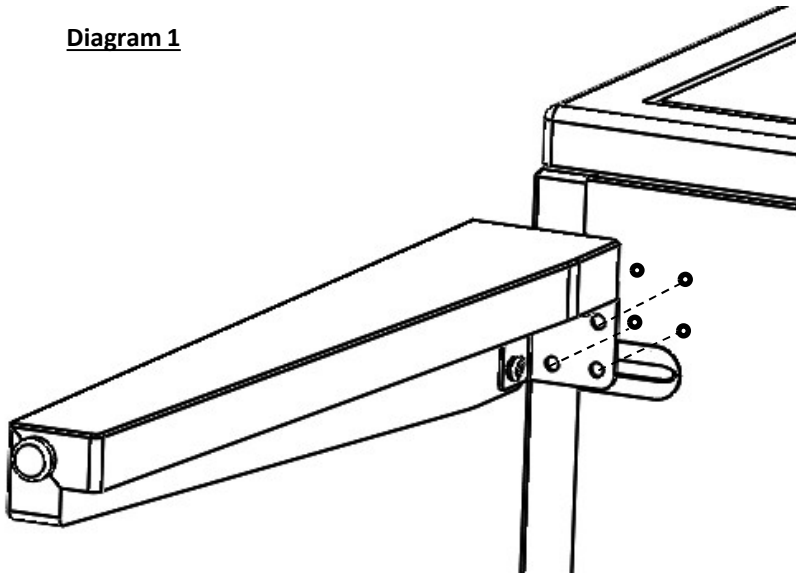
Installation Instruction PVC Legs



Installation

TIP: Remove doors / drawers to reduce the weight while fitting the legs and installing the cabinet.

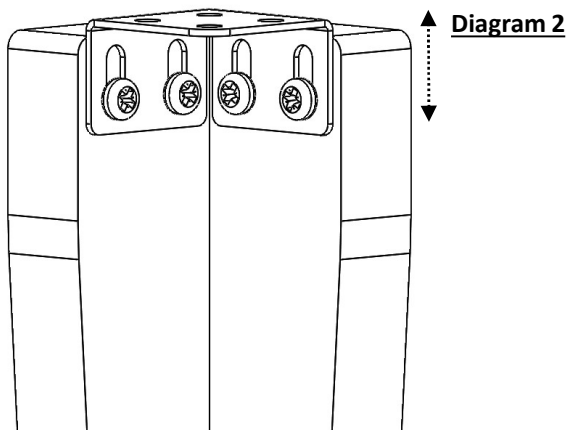
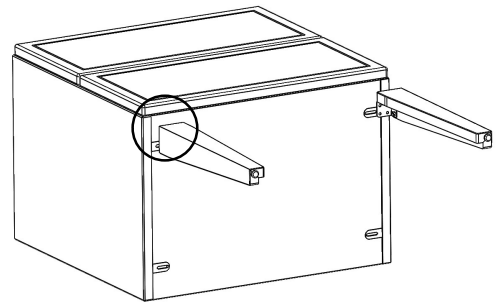
Diagram 1



Remove the drawers or doors.

Carefully lay the unit onto its back or top. Position the legs in the desired position and mark the fixing positions on the pre-fitted bracket on the leg. **See Diagram 1.**

Pilot hole the marked positions before fitting the legs with screws provided.



The legs are pre-fitted with a slotted bracket. This allows for adjustment if the leg is situated over the cabinet side. (Note: The bottom shelf is set up 0.5mm from cabinet side) **See Diagram 2.**

To adjust, slightly untighten the screws, adjust and then re-tighten in the desired position.

Diagram 3.

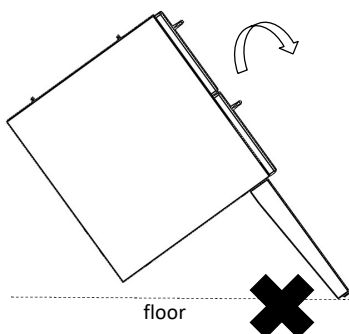
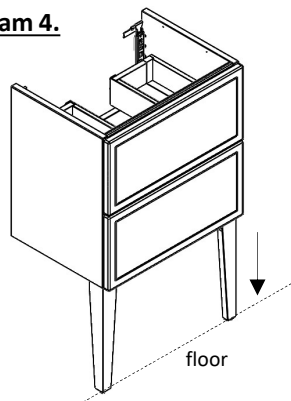


Diagram 4.



DO NOT use the legs as a cantilever for lifting the unit. This may cause damage, carefully lift with the legs clear of the floor. **See Diagram 3.**

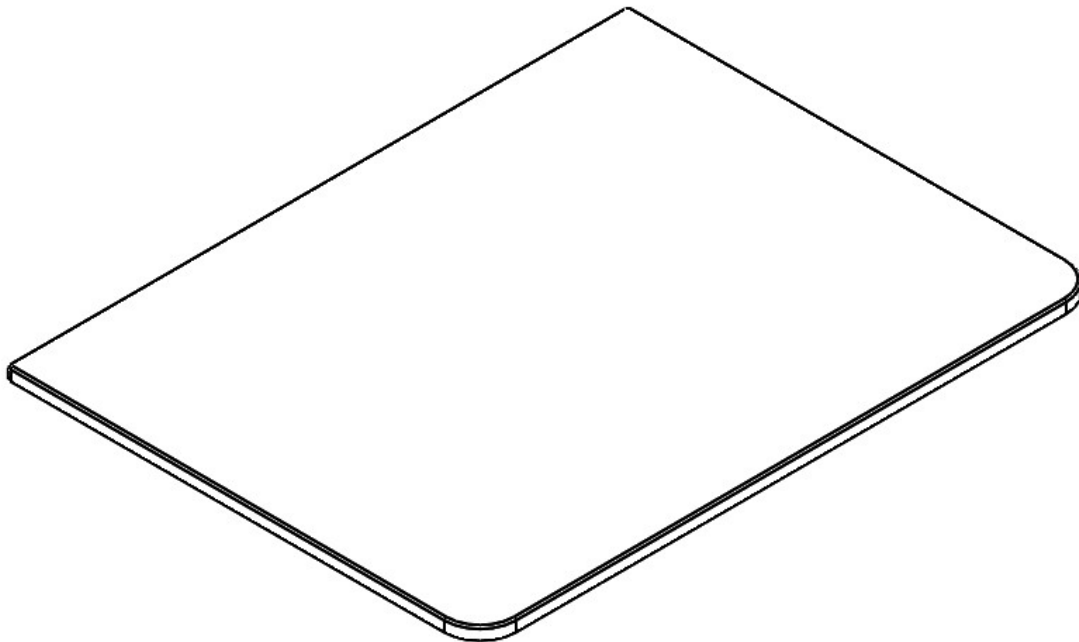
Once the legs are fitted, carefully fit the unit into the correct position and fasten to the wall. Adjust the unit down until the legs are firmly touching the floor. The weight of the cabinet should be used to help prevent movement of the leg. **See Diagram 4.**

Note: Legs are decorative and not weight bearing and units should be fixed back to the wall.



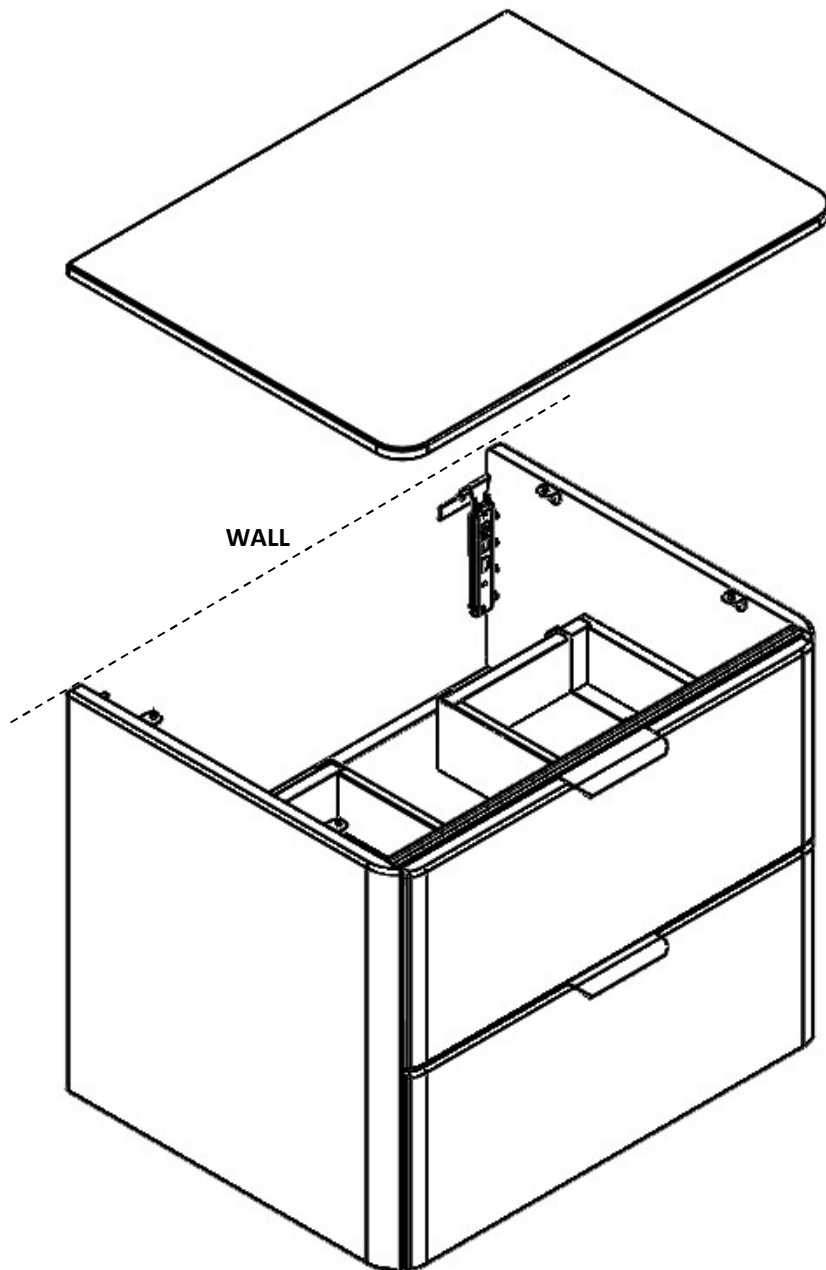
— est. 1964 —

Installation Instruction Worktops



Installation – 600 WORKTOPS

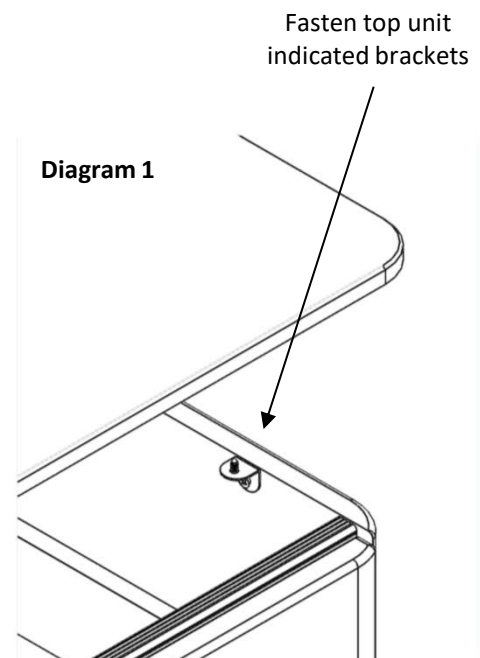
Note: Please take care when opening your worktop. Do not open box with knife as this may lead to the worktop being scratched.



Tops can be screwed to the unit using 3.5x12mm screws provided. (Pilot hole the worktop prior to fitting the screws).
Diagram 1.

Alternatively fit using a bead of silicone.

TIP: Drawers will need to be removed if using screws to fasten worktop.



NOTE: Clean up spillages immediately. Do not drag ceramics on worktop as this may scratch the surface.
If cutting seal all raw edge to prevent water ingress.

Installation – 800 WORKTOPS

Note: Please take care when opening your worktop. Do not open box with knife as this may lead to the worktop being scratched.



X2 Extra Brackets Supplied With 800mm Unit

Remember to remove the transit rail at the back of the unit before installing.

Mark a line level with top of the unit.

Fasten supplied brackets to the wall (screws not provided)

TIP: Drawers will need to be removed if using screws to fasten worktop.

Tops can be screwed to the unit using 3.5x12mm screws provided. (Pilot hole prior to fitting the screw) **Diagram 1**.

Alternatively, fit using a bead of silicone

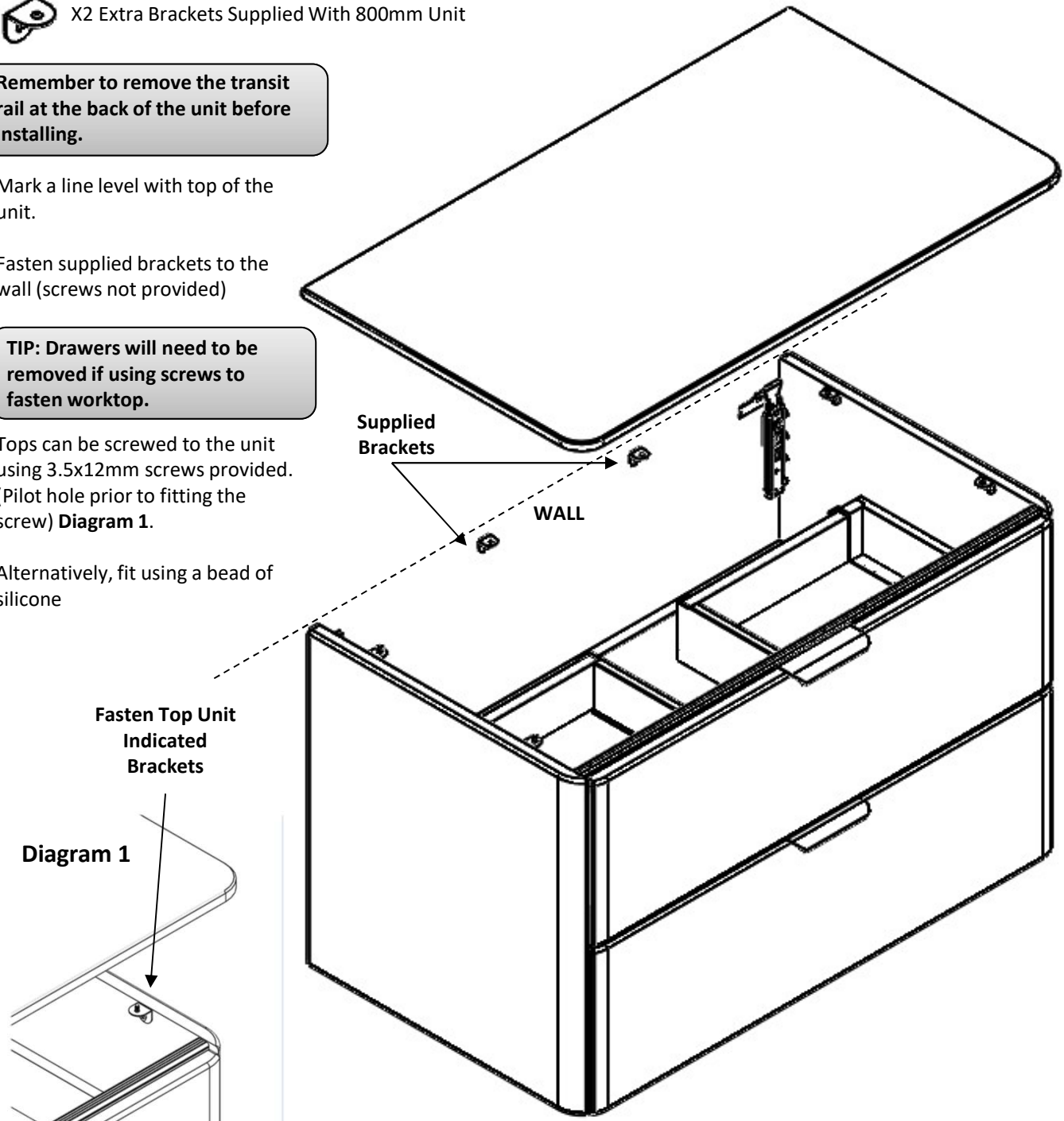
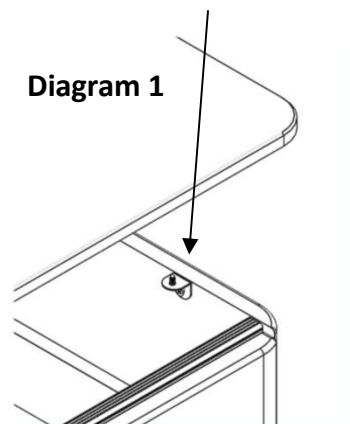
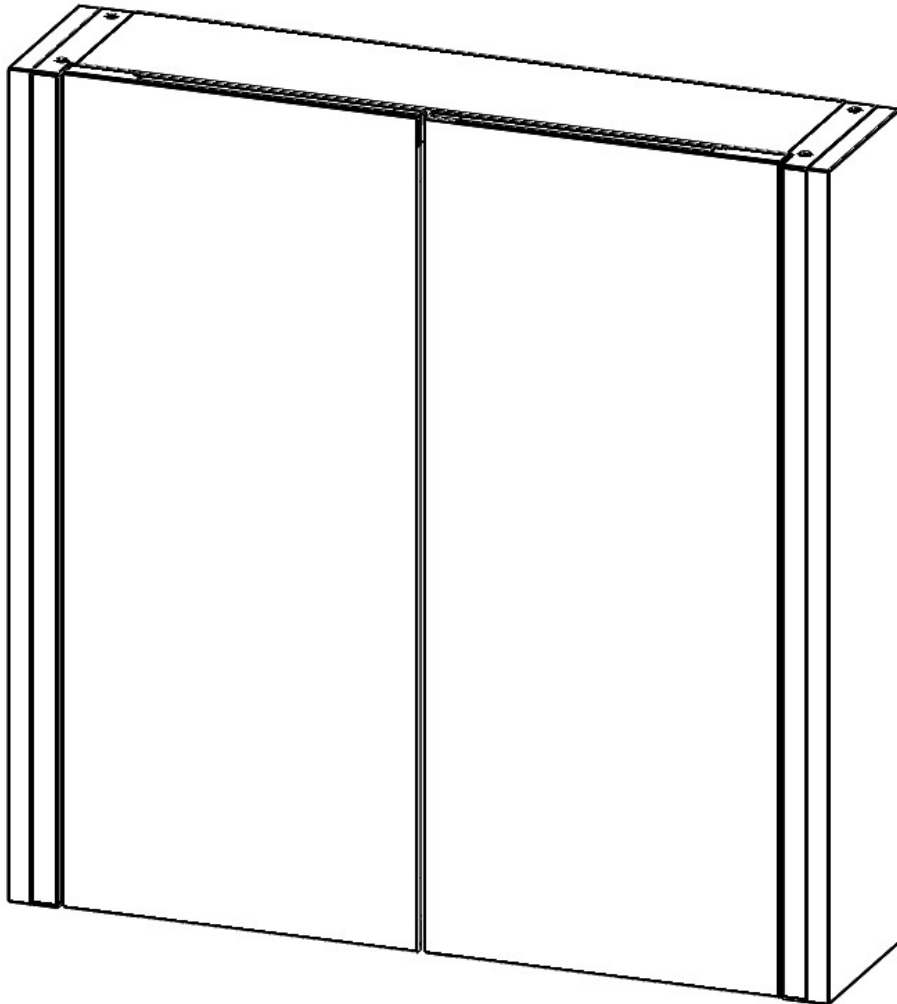


Diagram 1



NOTE: Clean up all spillages immediately. Do not drag ceramics on worktop as this may scratch the surface. If cutting seal all raw edges to prevent water ingress.

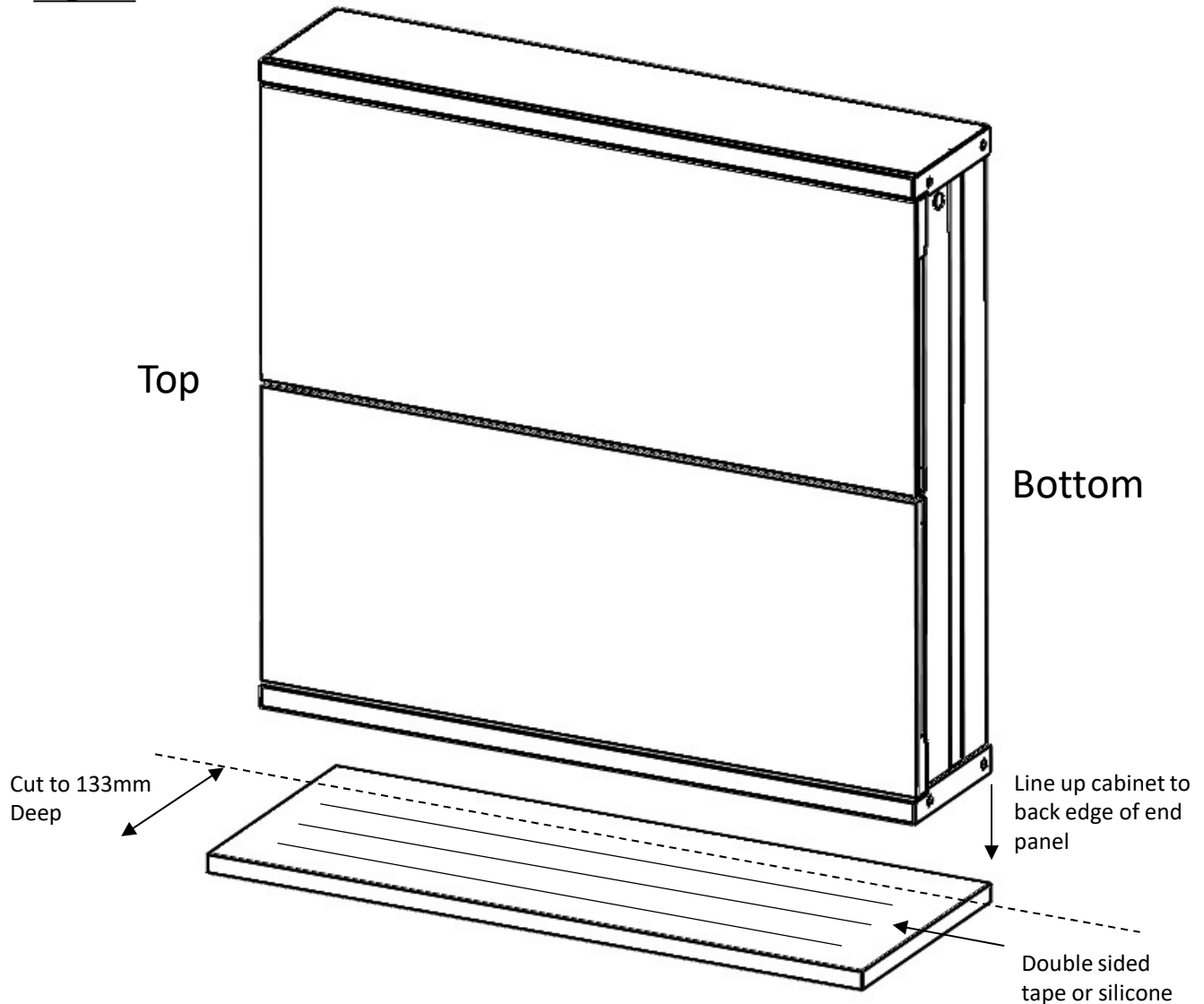
**Installation Instruction
Harmony Mirror End Panel**



Installation

NOTE: DO NOT SCREW END PANELS TO CABINET SIDE. THESE HAVE WIRES RUNNING THROUGH AND COULD CAUSE DAMAGE TO THE MIRROR CABINET & ELECTRICS.

Diagram 1



If fitting a cabinet end panel, you will be required to cut down the depth of the end panel to 133mm and/or scribe to the wall.

To secure the end panels to the cabinet, lay the cut end panel on clean surface to avoid scratching. Using either double sided tape or adhesive (not provided) adhere to the cabinet.

Carefully line the back edge of the mirror cabinet up with the back (cut edge) of the end panel. If using adhesive: clamps may be required to hold panel in correct position until adhesive sets or alternatively use the weight of the cabinet when positioned on its side, make sure the glass shelves are tightly fixed in position when doing so to avoid damage.

NOTE: DO NOT REMOVE DOORS FROM CABINET AS THEY HAVE ELECTRICS RUNNING THROUGH HINGES



— est. 1964 —



REGISTER YOUR GUARANTEE SCAN ABOVE OR VISIT – WWW.ATLANTABATHROOMS.COM

Customer Services

Tel: 0191 428 0444

Fax: 0191 489 0620