



— est. 1964 —

## **Installation Instruction**

### **Calibre Complete Collection**

#### **Models covered**

**Calibre 600 Single Drawer Basin Unit**  
**Calibre 1200 Double Drawer Basin Unit**

**Calibre 600 Mirrored Wall Unit**  
**Calibre 1200 Mirrored Wall Unit**

**Calibre 300 Wall Hung Storage Unit**

**Calibre Support Rail Kit**

---

# Contents

---

	Page
<u>Bathroom Furniture Assembly Instructions Introduction</u>	2
<u>Vanity-Wall-Mirror Units</u>	3 – 10
<u>Calibre Support Rail</u>	11-14
<u>Guarantee</u>	15

---

# Bathroom Furniture Assembly Instructions

---

## Product Identification

All units can be easily identified from the labels on the packaging. These labels include a description and product batch numbers. In the unlikely event of any missing items, these numbers should be quoted when contacting your supplier.

## Please inspect all products carefully before installation.

The guarantee does not cover any subsequent installation costs incurred if faults which would have been evident at the time of delivery are discovered after installation.

## Installation Guide and Assembly Manual

It is recommended that this guide should be read before any installation of units begins. Always unpack units carefully and check the contents before discarding the packaging as small items may still be in the packaging. To protect units from scratches only lay them on a clean flat surface.

## Electrical

Carrying out work in a bathroom that requires any addition or alteration to existing circuits could be notifiable to your local building control department to ensure it meets the correct safety standards. Generally, any work carried out to the circuit within a specific zone close to the bath or shower unit is considered notifiable. A straightforward way of meeting the requirements is to use a contractor who is registered with a Competent Person Scheme such as NICEIC or ELECSA. They can self-certify the work and notify the local building control department on your behalf.

## Sanitaryware

### Basins

Any cabinet edges around wash basins must be sealed with a waterproof agent or sealer.

Basins should be levelled on a bead of silicon onto the base unit if possible before the final water and waste connections are made.

### W/C Units

You will need to make cut-outs for pipes and cistern controls as directed by the Manufacturer's instructions or templates, remembering to seal any raw edges. The cistern will require fixing to the cross rail. (These fixings are not supplied)

Please note: These units are designed for back-to-wall pans as well as suspended "wall hung" pans when used with a suitable suspension frame.

## Guidelines for Care and Maintenance

To maintain the appearance and prolong the life of your new bathroom products we recommend the following,

### Furniture

Wipe spills up immediately with a clean soft damp cloth as excessive amounts of spillage or condensation can cause deterioration of the

woodwork. We recommend that furniture be cleaned with a soft damp cloth and warm soapy water. Avoid using cleaners or polishes that contain abrasives, solvents, acid or ammonia.

### Mirrors

Wipe off excessive moisture or condensation, clean with a soft cloth. Avoid using cleaners that contain abrasives, solvents, acid or ammonia.

### Ceramic Sanitaryware

Clean with a soft damp cloth and warm soapy water; rinse with clean water and polish with a soft cloth. Avoid using cleaners that contain abrasives, solvents, acid or ammonia.

### Gel-coated Cast Mineral Washbasins

Gel-cast basins are designed and guaranteed to be used with hot water up to a maximum temperature of 65°C, this temperature must not be exceeded

Clean with a soft damp cloth, water and soap or very mild detergent, rinse and polish with a soft cloth. Avoid using cleaners that contain

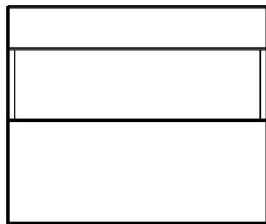
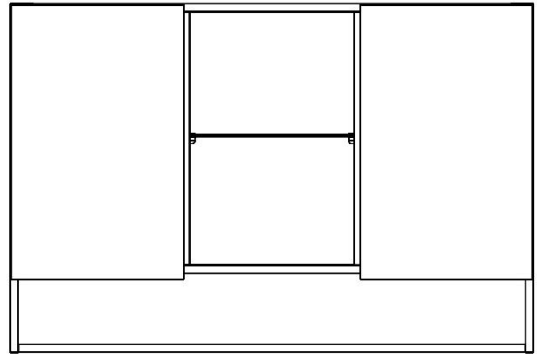
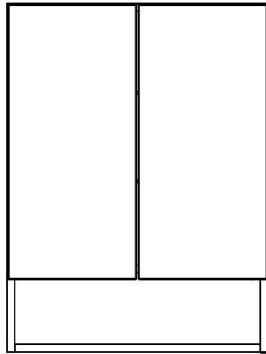
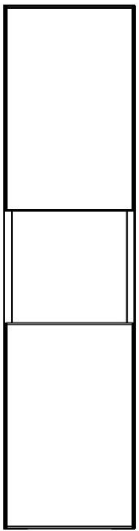
abrasives, solvents, acid or ammonia. Do not use caustic soda or bleaches. For a good shine use a fine polish around twice a year and then finish with a wax e.g. car wax. Care instructions are included with the washbasin.

### Brassware

Clean with a damp cloth, water and soap, rinse clean and polish with a cloth.

Avoid using cleaners that contain abrasives, solvents, acid or ammonia.

## Installation Instruction



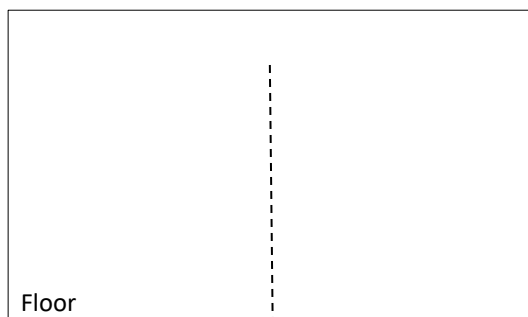
**Calibre 600 Single Drawer Basin Unit**  
**Calibre 1200 Double Drawer Basin Unit**

**Calibre 600 Mirrored Wall Unit**  
**Calibre 1200 Mirrored Wall Unit**

**Calibre 300 Wall Hung Storage Unit**

## Installation

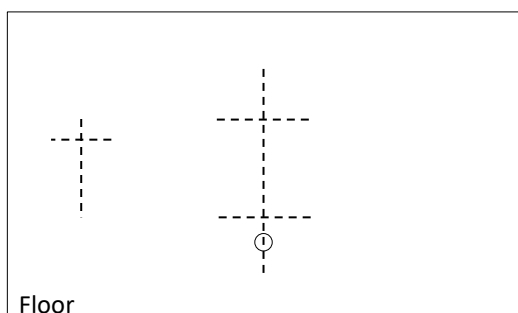
**Note:** All cabinets should be fastened to the wall before fixing the basin, after alignment we recommend additional wall fixings are made, then the final installation of the basin can be carried out.



To begin the installation draw a centre line, taking into account the position of the waste and pipe work.

**See Diagram 1**

**Diagram 1**



Depending on the units purchased, plan and mark out the desired installation height of the Units.

**Note:** We recommend an installation height of:

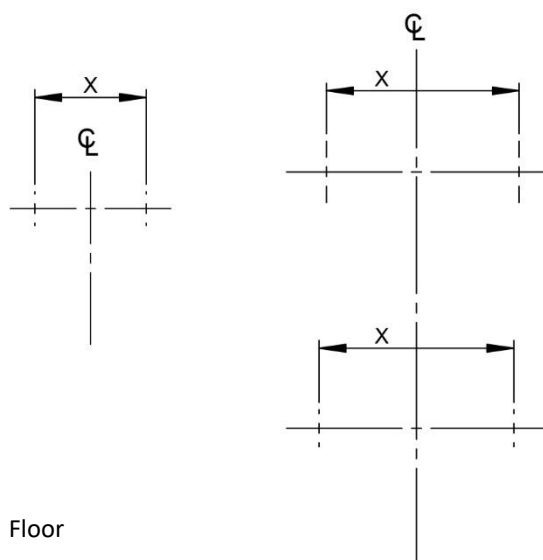
Basin Unit approx. **800mm**

Mirrored Wall Unit approx. **1970mm**

Tall Wall Unit: **As desired**

**See Diagram 2**

**Diagram 2**



**Diagram 3**

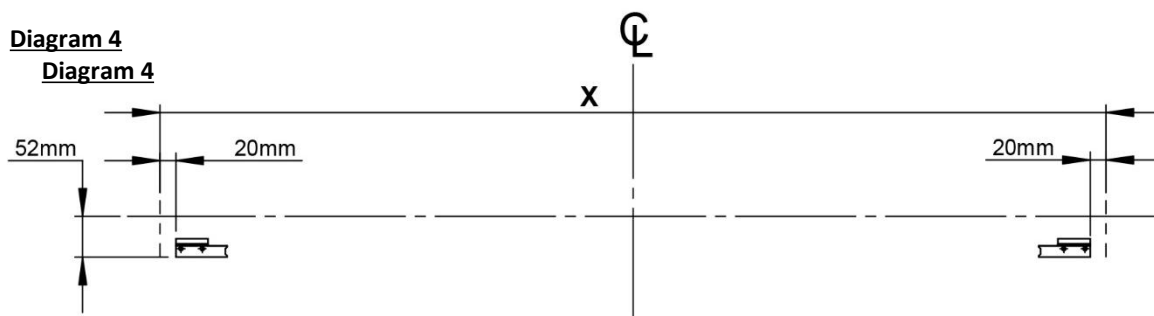
Next mark the position of the outer edges of the Units = **X**

**See Diagram 3**

# Installation

**Diagram 4**

**Diagram 4**

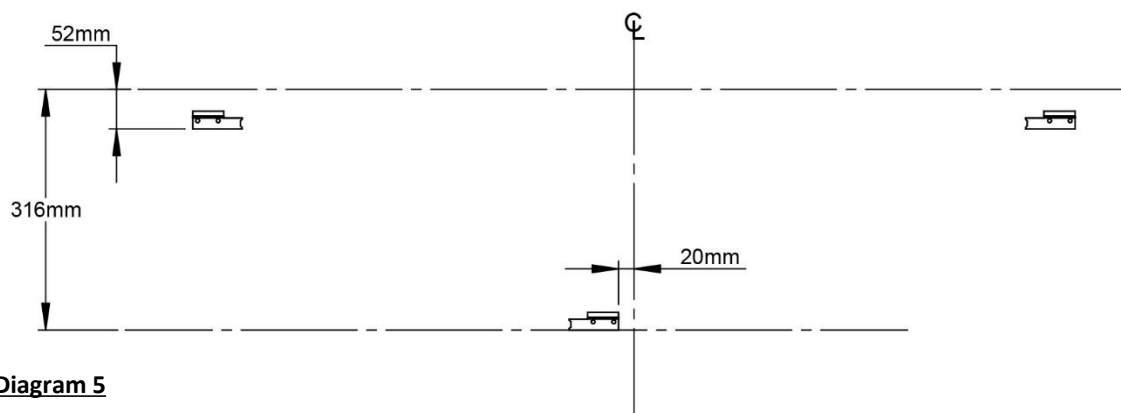


For all units mark out the position of the wall plates (supplied as pairs) using the dimensions provided above.

Once marked, drill the fixing positions. Depending on the wall medium, it may be necessary to plug the drilled holes. See **'Important Note'** below.

Next screw and secure the wall plates to the wall using suitable screws. See **'Important Note'** below.

See Diagram 4



**Diagram 5**

**Note:** The 1200 Calibre Double Drawer Base Unit requires a 3<sup>rd</sup> wall plate to be positioned towards the bottom of the unit.

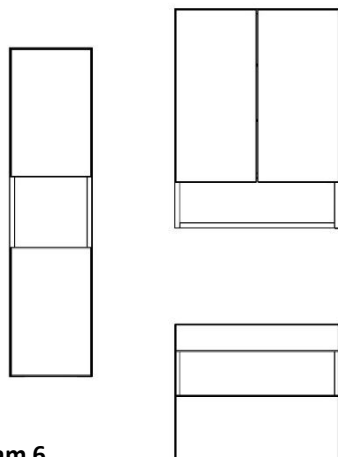
Mark, drill and fix the lower wall plate (supplied as pairs, ensure the correct bracket is used) using the dimensions provided above. See **'Important Note'** below.

See Diagram 5

## IMPORTANT NOTE:

Wall fixings (i.e. screws/wall plugs etc.) are not supplied as these are crucially dependent upon the type of wall and surface the surround is going to be fixed too. The installer is therefore responsible for ensuring that suitable fittings are used according to the particular model to be installed as well as individual fitting situations and environments. All mechanical fixings, for holding the product in position, must be secured to a solid wall or structure.

# Installation



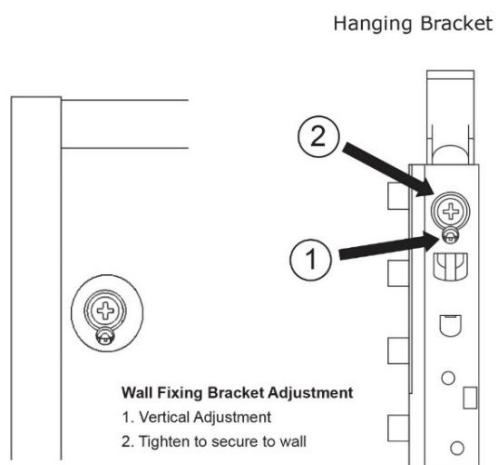
**Diagram 6**

**Note:** All wall units have lighting pre-installed. Ensure the lights are connected and the cables are routed in such a way to avoid damaged, before hanging.

**Note:** The basin units require the lighting to be installed by the installer.

Hang the units, making sure the hanging brackets on the rear of the units, engage with the wall plates on the wall.

**See Diagram 6**



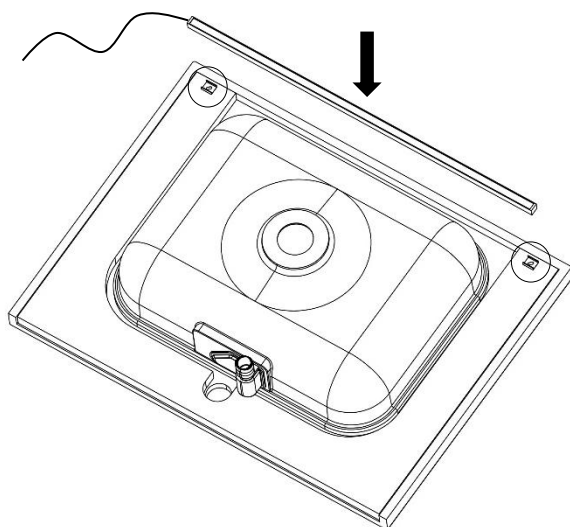
**Diagram 7**

Adjust the units so they sit level, using a Pozi screw driver. **(1)**

Finally fix the units in position by tightening screws, using a Pozi screw driver. **(2)**

**See Diagram 7**

**Note:** For all wall units once fully adjusted & tightened fit the supplied cover caps into holes on back panel.



**Diagram 8**

## **1200 and 600 Basin Units Only**

Secure the supplied lighting to the underside of the Solid Surface Basin Top or Counter Top using the brackets provided.

**Tip:** The Solid Surface Basin Top has a timber core, ideal for securing into.

**Tip:** For installation onto a **non** timber 600 Unit Counter Top, consider adding an off cut of timber to the underside to fix into. For installation onto a 1200 Unit Counter Top, follow the separate instructions provided with the Support Rail Kit.

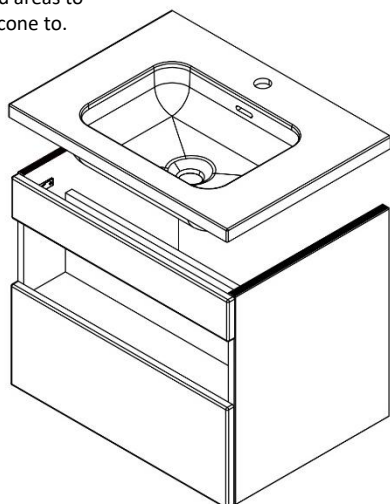
Connect all lighting to the mains and route accordingly, taking care not to trap the cables.

**See Diagram 8**

# Installation



Suggested areas to apply Silicone to.



**Diagram 9**

## **1200 and 600 Basin Units Only**

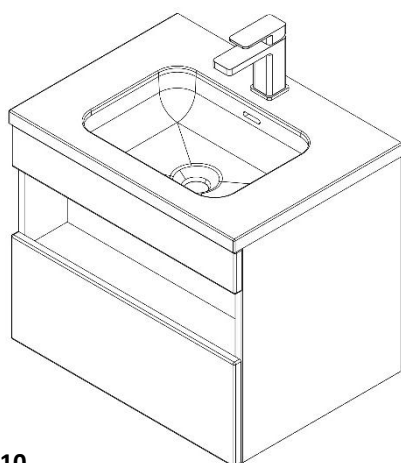
Depending on the items purchased either fix the Solid Surface Basin or Counter Top to the unit using silicone.

**See Diagram 9**

**Note:** If installing a Counter Top onto the 1200 Basin Unit, please follow the separate instruction supplied with the Support Rail Kit.

**Note:** Ensure holes for tap and basin have been drilled, before securing any top.

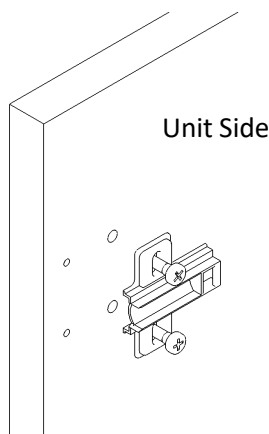
Connect all lighting to the mains and route accordingly, taking care not to trap the cables.



**Diagram 10**

Proceed with fitting the taps and waste as per the manufacturers instructions.

**See Diagram 10**



**Diagram 11**

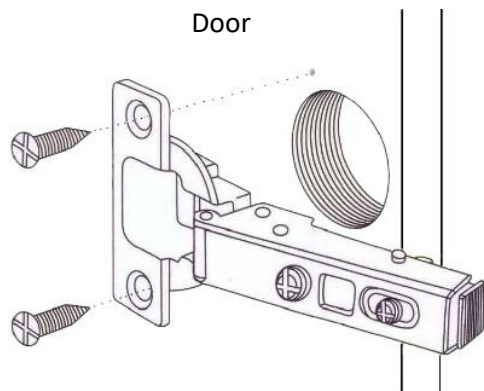
## **Hanging Doors**

**Tip:** Lay the doors on a clean flat surface that will not damage or scratch the product.

Screw the hinge plate to unit side using the predrilled 5mm holes as indicated in **Diagram 11**.



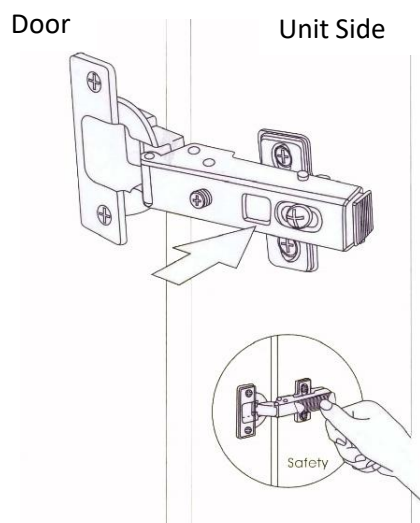
## Installation



Locate the hinge arm into predrilled 35mm hole on back of door and secure with 2 No.6x5/8" countersunk screws provided.

**See Diagram 12**

**Diagram 12**

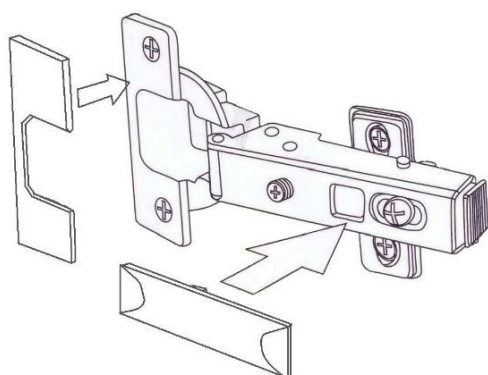


To hang the door locate the hinge arm, over the hinge plate and click into position.

**See Diagram 13**

**Tip:** Adjust the alignment of the door before final tightening.

**Diagram 13**

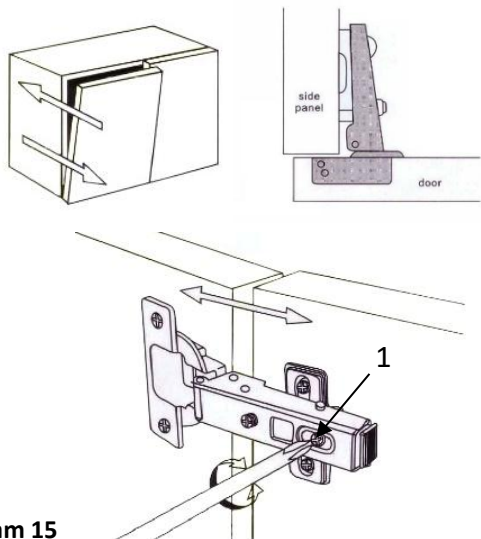


Click the cover plates into position on the hinges.

**See Diagram 14**

**Diagram 14**

## Adjustments



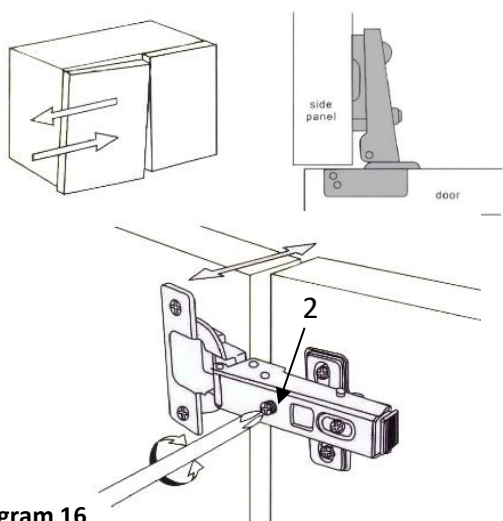
**Diagram 15**

### Front adjustment

Tighten screw to fix the door (1)

The distance between the door and the side panel can be adjusted (1)

See Diagram 15



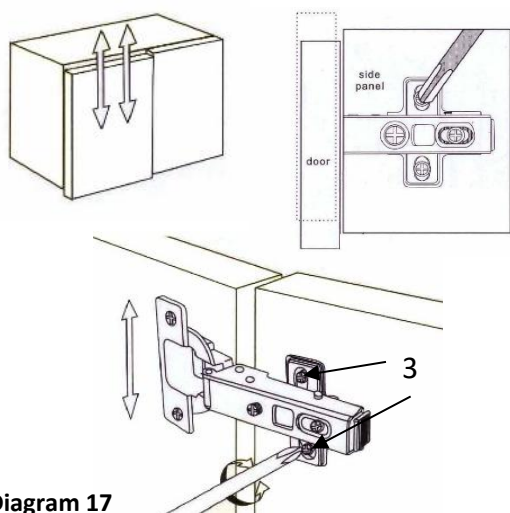
**Diagram 16**

### Lateral overlay adjustment

Adjust the screw to enable the door to adjust to the appropriated position against the side panel. (2)

For the protection of the damper, it just allows a lateral adjustment. (2)

See Diagram 16



**Diagram 17**

### Vertical adjustment

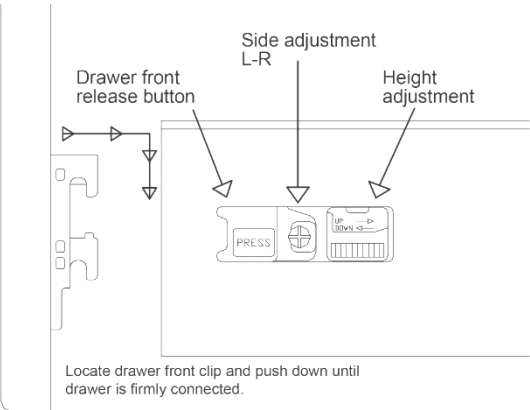
Traditional up and down adjustment. (3)

The door can be vertically adjusted by turning the plate screws up and down. (3)

See Diagram 17

# Adjustments

## Drawer Box Adjustment



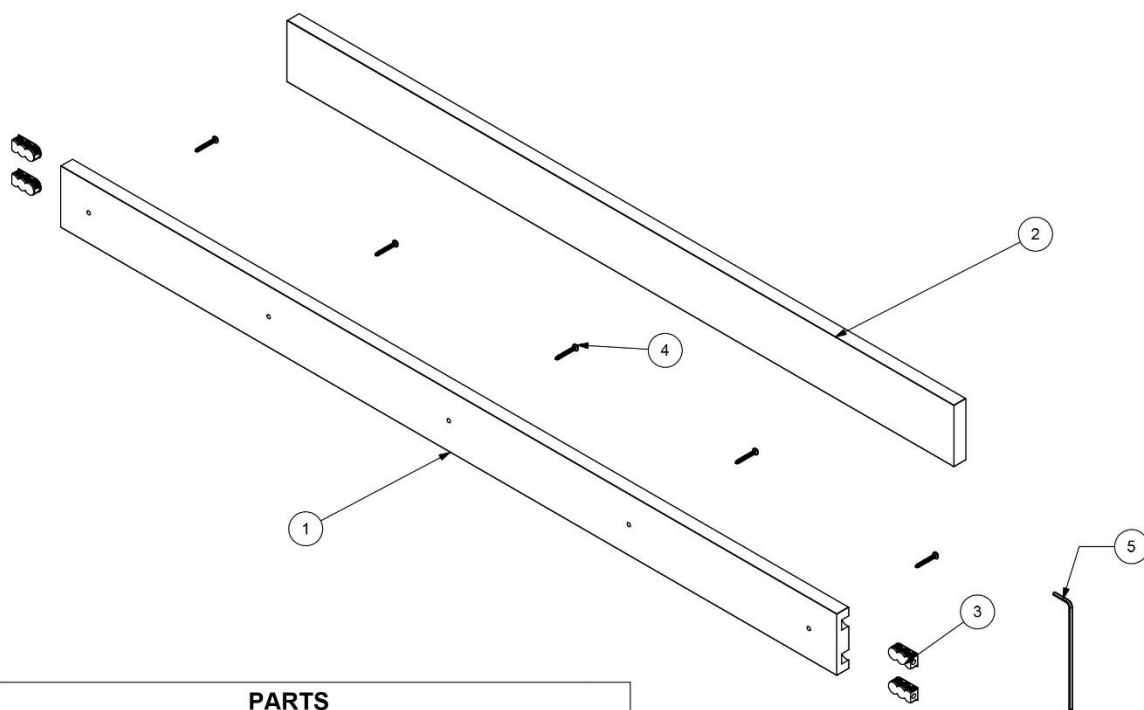
**Diagram 18**

Adjust the drawers as required.

**See Diagram 18**

## Installation Instruction

### Calibre Support Rail Kit



PARTS		
ITEM NO.	PART DESCRIPTION	QTY.
1	FRONT SUPPORT RAIL	1
2	BACK SUPPORT RAIL	1
3	LAMELLO CABINEO 12	4
4	8 X 1 1/4 (30MM) POZI DOME HEAD SCREW	5
5	HEX KEY, L SHAPE 4mm BALL END	1

---

## Bathroom Furniture Assembly Instructions

---

### Product Identification

All units can be easily identified from the labels on the packaging. These labels include a description and product batch numbers. In the unlikely event of any missing items, these numbers should be quoted when contacting your supplier.

### Please inspect all products carefully before installation.

The guarantee does not cover any subsequent installation costs incurred if faults which would have been evident at the time of delivery are discovered after installation.

### Installation Guide and Assembly Manual

It is recommended that this guide should be read before any installation of units begins. Always unpack units carefully and check the contents before discarding the packaging as small items may still be in the packaging. To protect units from scratches only lay them on a clean flat surface.

### Electrical

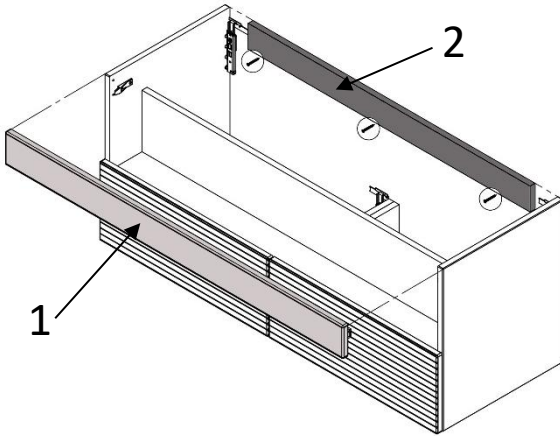
Carrying out work in a bathroom that requires any addition or alteration to existing circuits could be notifiable to your local building control department to ensure it meets the correct safety standards. Generally, any work carried out to the circuit within a specific zone close to the bath or shower unit is considered notifiable. A straightforward way of meeting the requirements is to use a contractor who is registered with a Competent Person Scheme such as NICEIC or ELECSA. They can self-certify the work and notify the local building control department on your behalf.

#### IMPORTANT NOTE:

Wall fixings (i.e. screws/wall plugs etc.) are not supplied as these are crucially dependent upon the type of wall and surface the surround is going to be fixed too. The installer is therefore responsible for ensuring that suitable fittings are used according to the particular model to be installed as well as individual fitting situations and environments. All mechanical fixings, for holding the product in position, must be secured to a solid wall or structure.

# Installation

**Note:** The Support Rail Kit is required when installing a Counter Top (any material) with the 1200 Calibre Basin Unit.



**Diagram 1**

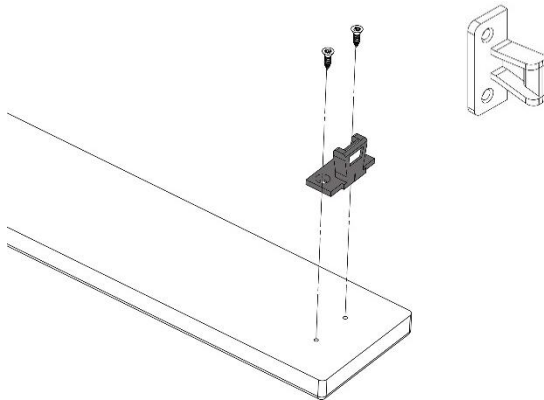
Unclip the Front Top Panel (**1**) from the unit and place safely to one side.

Mark, drill and fix the Back Support Rail (**2**) to the wall between the hanging brackets on either side of the unit.

See 'Important Note' on Page 1.

**Note:** Ensure the top edge of the back support rail is flush with the top of the sides of the unit once installed.

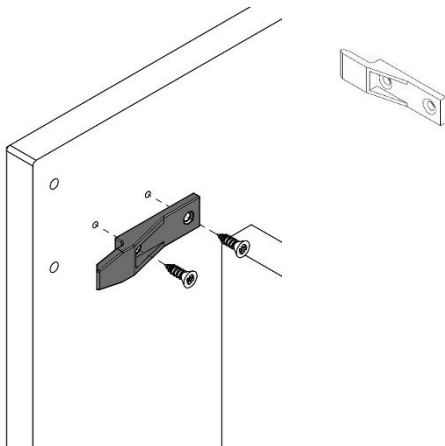
See Diagram 1



**Diagram 2**

Remove the 2 x Keku Top Panel fittings from the Front Top Panel (**1**) and discard.

See Diagram 2



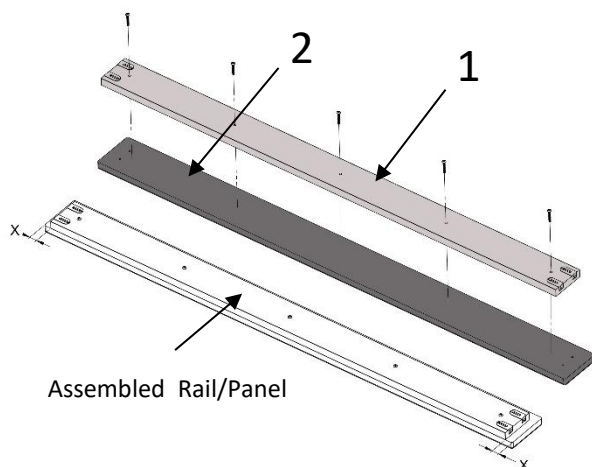
**Diagram 3**

Remove the 2 x Keku Male partition fastener/ cabinet fittings.

1 x each side of the unit and discard.

See Diagram 3

## Installation



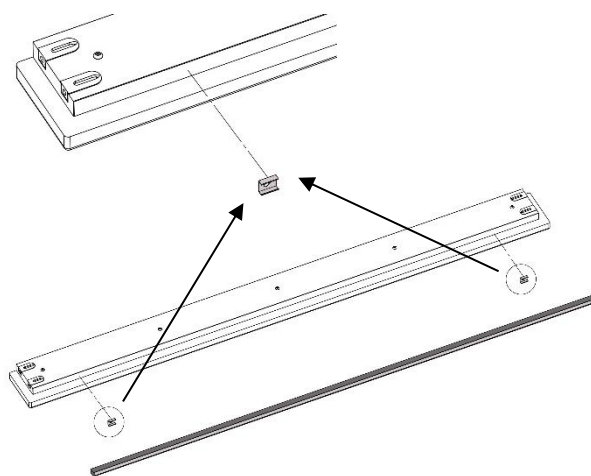
**Diagram 4**

Using the **5 off**, 8 X 1 1/4 (30mm) Pozi Dome Head screws provided.

Fix the Front Support Rail **(1)** **centrally** to Front Top Panel **(2)**.

**Note:** Ensure the top edges of the Front Support Rail and Front Top Panel are flush.

**See Diagram 4**

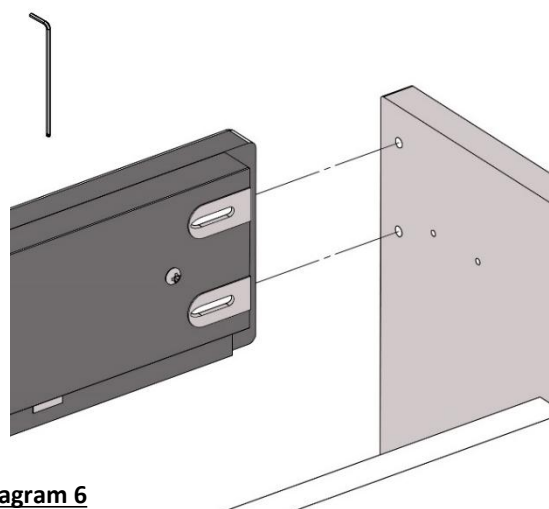


**Diagram 5**

Next secure the supplied lighting to the bottom edge of the assembled rail/panel using the brackets and screws provided.

**See Diagram 5**

Connect all lighting to the mains and route accordingly, taking care not to trap the cables.



**Diagram 6**

Once assembled, fix the assembled rail/panel into position.

Align the 4 x Cabineo Fittings with the pre-drilled holes in the side of the unit and fix into place using the Hex Key, L-Shaped 4mm Ball End provided.

**Note:** Ensure, once installed the assembled rail sits flush with the top of the unit.

**See Diagram 6**

To finish the installation please follow from **Step 9-Page 5** in the instructions supplied with the basin unit.



— est. 1964 —

REGISTER YOUR GUARENTEE – [WWW.ATLANTABATHROOMS.COM](http://WWW.ATLANTABATHROOMS.COM)

**Customer Services**

Tel: 0191 428 0444

Fax: 0191 489 0620